

Isle of Wight Dinosaur History

Can you place these living things in chronological order?

- ▶ Tick which of these living beings you think lived BEFORE the dinosaurs, and which lived AFTER the dinosaurs had died out
- ▶ You can tick both if you think they lived at the same time

Diplovertebron



BEFORE

AFTER

Teaching resources by Education Destination Ltd.

Curriculum relevant materials supporting school trips to the Isle of Wight

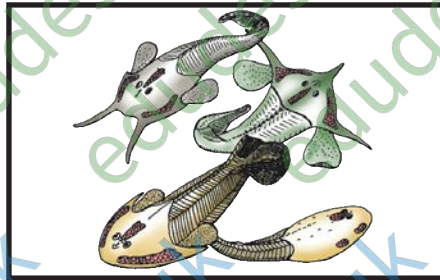
Book today with Education Destination and get full access to this and hundreds more quality resources

www.edudest.uk

Homo sapiens
(human)



Osteostraci Janvier
(armoured, jaw-less fish)



Ammonite
(marine invertebrate)



Woolly Mammoth
(mammal)



TASK

- ▶ Dinosaurs lived millions of years ago but many were not found until recently
- ▶ Can you match the description on the right with the dinosaur on the left?
- ▶ Draw lines to link them



- ✓ One of the first dinosaurs found
- ✓ Early 19th Century
- ✓ Their bones are common on the Island
- ✓ The name comes from 'Iguana' (a type of reptile)



- ✓ It was found in 1995 (very recently)
- ✓ This dinosaur was named after Gavin Leng

Leng found its claw on the beach

Teaching resources by Education Destination Ltd.

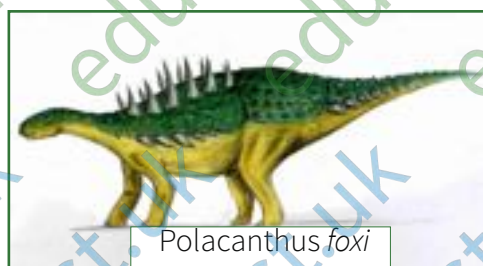
Curriculum relevant materials supporting school trips to the Isle of Wight

Book today with Education Destination and get full access to this and hundreds more quality resources

www.edudest.uk



- ✓ A very large plant-eater
- ✓ Found in 1992
- ✓ It would have been 15-20m long
- ✓ It is on display at Dinosaur Isle museum



- ✓ It is very rare and not many remains exist
- ✓ Found in 1865 by Victorian fossil collector Reverend Fox.
- ✓ Has large spikes on its back and shoulders



Dino's hint: "visit the Dinosaur Isle museum website, click on the dinosaurs homepage and research the detailed information to find the answers!"