



Dino Data Challenge!

Can you use your maths skills to find the most popular dinosaur?

In this activity you will determine which are the favourite dinosaurs at Dinosaur Isle museum using maths skills!

Tally up the responses and chart the results before drawing your conclusions.

Student Introduction

During the course of your visit, find out something about each of these dinosaurs:

- ✓ Iguanodon
- ✓ *Neovenator salerii*
- ✓ *Eotyrannus lengi*
- ✓ Hypsilophodon
- ✓ Valdosaurus
- ✓ Sauropodomorpha
- ✓ Polacanthus
- ✓ Baryonyx

Which one do you like?

It might be down to features, speed, size, power, looks, or even name!

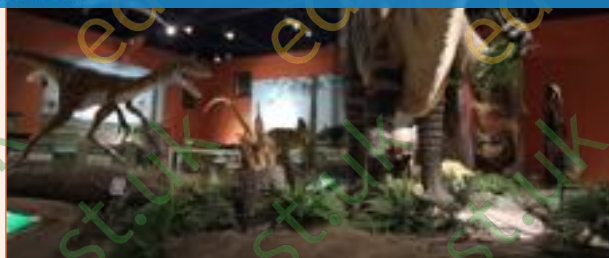
Teaching resources by Education Destination Ltd.

Curriculum relevant materials supporting school trips to the Isle of Wight

Book today with Education Destination and get full access to this and hundreds more quality resources

www.edudest.uk

- ✓ As each student in your group or class tells the teacher which dinosaur they'd like to vote for, you need to mark their answer next to the corresponding dinosaur name on the tally table below. Don't forget to add your own vote!



Isle of Wight Dinosaur	Tally - BOYS	Tally - GIRLS	TOTAL
Iguanodon			
<i>Neovenator salerii</i>			
<i>Eotyrannus lengi</i>			
Hypsilophodon			
Valdosaurus			
Sauropodomorpha			
Polacanthus			
Baryonyx			

Task 2 - Bar Chart

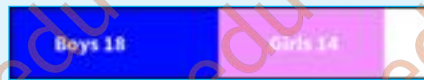
✓ You now need to convert the vote frequencies into a bar chart, using the graph paper supplied.

TIP

You must decide on the most appropriate scale for the X axis - this will depend on the number of students in your group.

TASK

For each dinosaur type, draw a stacked bar chart (like the one below) - first the boys' results, then the girls' to give the totals.



Teaching resources by Education Destination Ltd.

Curriculum relevant materials supporting school trips to the Isle of Wight

Book today with Education Destination and get full access to this and hundreds more quality resources

www.edudest.uk

Remember that all the angles in a circle add up to 360° so by dividing each of our tally results by the number of students, and then multiplying by 360, you can work out the correct angles.

Total number of votes received (should match the number of students in the group) _____

Copy the TOTALS from the previous page, then perform the calculations in the following two columns to work out the number of degrees for each segment of the chart:

Isle of Wight Dinosaur	TOTAL	Divided by number of votes =	Multiplied by 360 =
Iguanodon			°
<i>Neovenator salerii</i>			°
<i>Eotyrannus lengi</i>			°
Hypsilophodon			°
Valdosaurus			°
Sauropodomorpha			°
Polacanthus			°
Baryonyx			°

Now plot these segments onto a pie chart using the template provided.

Colour, pattern or shade each segment differently, and then complete the KEY.

Teaching resources by Education Destination Ltd.

Curriculum relevant materials supporting school trips to the Isle of Wight

Book today with Education Destination and get full access to this and hundreds more quality resources

www.edudest.uk

DINO BAR CHART



Baryonyx



Polacanthus



Sauropodomorpha



Valdosaurus



Hypsilophodon



Eotyrannus



Neovenator



Iguanodon

Number of Votes

Teaching resources by Education Destination Ltd.

Curriculum relevant materials supporting school trips to the Isle of Wight

Book today with Education Destination and get full access to this and hundreds more quality resources

www.edudest.uk

KEY


Baryonyx 

Polacanthus 

Sauropodomorpha 

Valdosaurus 

Hypsiliphodon 

Eotyrannus 

Neovenator 

Iguanodon 

Questions

1a. Which dinosaur was the most popular with the BOYS in the group?

b. Why do you think this is?

2a. Which dinosaur was the most popular with the GIRLS in the group?

b. Why do you think this is?

3a. Which two dinosaurs received the MEDIAN of the vote totals?

Teaching resources by Education Destination Ltd.

Curriculum relevant materials supporting school trips to the Isle of Wight

Book today with Education Destination and get full access to this and hundreds more quality resources

b. What is the MEAN of their two vote totals?

www.edudest.uk

4. What is the MODE of the BOYS' vote totals? If there is no mode, say so.

5. What is the MODE of the GIRLS' vote totals? If there is no mode, say so.

6. What is the RANGE of the BOYS' vote totals?

7. What is the RANGE of the GIRLS' vote totals?

8. What is the RANGE of the combined vote totals?



102223

©2014 Education Destination www.educationdestination.co.uk
Images © Dinosaur Isle

