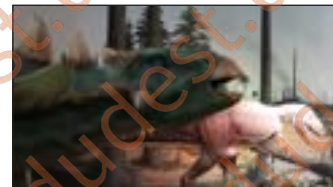


Homes and Habitats!

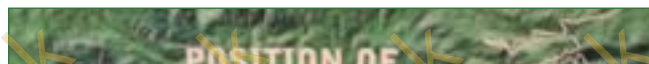
Student Introduction

Dinosaurs lived in habitats very different from the ones we live in today as the Isle of Wight had a very different climate then.

- ▶ What can you find out about dinosaurs' habitats?
- ▶ Why did the habitats support fossilisation of dinosaur types?



Wight Dinosaurs - how they lived...



Teaching resources by Education Destination Ltd.

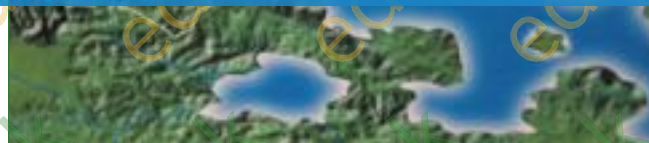
Curriculum relevant materials supporting school trips to the Isle of Wight

Book today with Education Destination and get full access to this and hundreds more quality resources

carefully you'll see that there was no island as we recognise it today!

www.edudest.uk

Not only has the shape of the land changed, but the climate would be very different.



It may have changed many times during the life-span of the dinosaur species.

Q1. In the main museum case 'Fossil Plants from Cretaceous Park', you can see examples of plants from the period in which the dinosaurs lived.

List 4 types of plant on display in this case that you think could have been food for the dinosaurs:

- 1.
- 2.
- 3.
- 4.

- ▶ Millions of years ago, dinosaurs' habitat changed frequently between dry periods and then heavy rain and floods
- ▶ At this time, the Isle of Wight was part of a large floodplain in a hotter part of the world much nearer to the Equator

Q2. Why might this habitat be ideal for fossils to form?

Dinosaurs - their global habitat



In the museum, find the information board titled 'Where are dinosaurs found?'

Q4. What are dinosaurs' remains found in?

Read the board 'Drought followed by rainstorms'.

Q6. List some of the features of the Wealden habitat:

Q5. Why do you think so many dinosaurs were found near seas, coasts and rivers?

Teaching resources by Education Destination Ltd.

Curriculum relevant materials supporting school trips to the Isle of Wight

Book today with Education Destination and get full access to this and hundreds more quality resources

www.edudest.uk



102131

©2014 Education Destination www.educationdestination.co.uk
Images © Dinosaur Isle

