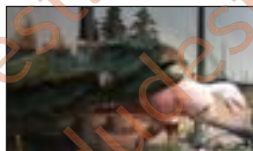


Homes and Habitats!

Dinosaurs lived in habitats very different from the ones we live in today, in fact the Isle of Wight had a very different climate then.



Student Introduction

- ▶ What can you find out about dinosaurs' habitats?
- ▶ Can you observe aspects of these habitats at the Dinosaur Isle museum?
- ▶ Can you understand the variety of habitats and why they supported fossilisation of dinosaur types?

Wight Dinosaurs - how they lived...

This resource is part of a series of teaching resources for the Isle of Wight Dinosaurs. The island has changed since the period occupied by the dinosaurs. It is an almost unrecognisable landscape.

Book today with Education Destination and get full access to this and hundreds more quality resources

island as we recognise it today!

www.edudest.uk

Not only has the shape of the land changed, but the climate would be very different. In fact, it may have changed many times during the life-span of the dinosaur species.



Q1. In the main museum case 'Fossil Plants from Cretaceous Park', you can see examples of plants from the period in which the dinosaurs lived.

List 4 types of plant on display in this case that you think could have been food for the dinosaurs:

- 1.
- 2.
- 3.
- 4.

Q2. Millions of years ago, dinosaurs were subject to drought and then intense rainstorms and floods. The Isle of Wight was part of a large floodplain much nearer to the Equator. Why might this be a good environment for the eventual fossilisation of plants, animals or other organisms from this period?

Q3. Fossils can be many different colours when found. Why might intense heat or heavy rain at the time of death affect their ultimate fossil colouring?

Dinosaurs - their global habitat



In the museum, find the information board titled 'Where are dinosaurs found?'

Q4. What are dinosaurs' remains found in?

Read the board 'Drought followed by rainstorms'.

Q6. List the key features of the Wealden habitat:

Q5. What conclusions can you draw from the location of where dinosaurs were found all around the world?

Teaching resources by Education Destination Ltd.

Curriculum relevant materials supporting school trips to the Isle of Wight

Book today with Education Destination and get full access to this and hundreds more quality resources

www.edudest.uk



102132

©2014 Education Destination www.educationdestination.co.uk
Images © Dinosaur Isle