



Investigate the Dinosaurs!

Hunt for answers in the Dino museum!



Resource Number

102161

Student Introduction

- ▶ Dinosaur Isle is an interactive museum
- ▶ It shows us what the world of the dinosaurs was like
- ▶ Can you discover the scientific facts?

Science KS2L
Scientific Enquiry
Investigate the dinosaurs

Teaching resources by Education Destination Ltd.

Curriculum relevant materials supporting school trips to the Isle of Wight

Book today with Education Destination and get full access to this and hundreds more quality resources

www.edudest.uk

THE CHALLENGE!

Explore the curriculum

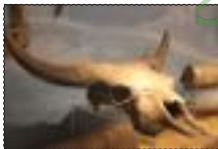
1. What are the 3 rock types called?

- 1.
- 2.
- 3.

Ice Age Wight

2. What were the features of The Ice Age?

3. What is this?



Fossils: Messages from the Past

4. What is a fossil?

Enter the main Dinosaur Museum exhibit area

7. Name FOUR types of dinosaur found on the Isle of Wight:

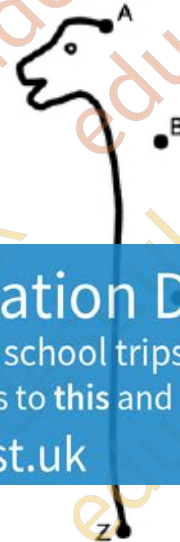
- 1.
- 2.
- 3.
- 4.

8. Why do you think one type of dinosaur might have different teeth to another?



Dino Word Hunt

D	J	S	U	S	K	C	O	R	T	AMMONITE
S	E	N	O	B	S	P	Z	V	R	BONES
K	D	I	N	O	S	A	U	R	R	CHALK
E	T	E	E	T	H	W	R	O	F	DINOSAUR
W	T	N	I	R	P	L	E	S		
N	F	V	D	I	C	E				
F	F	O								
C	H	A	L	K	R	J	F	V	B	NEOVE
N	E	O	V	E	N	A	T	O	R	ROCKS
T	E	T	I	N	O	M	M	A	V	TEETH

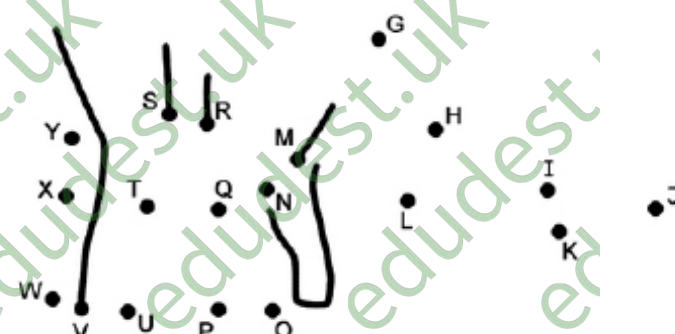


Make this dinosaur picture!
Connect the dots by linking the capital letters.
Connect A to B to C to D, and so on.

Teaching resources by Education Destination Ltd.

Curriculum relevant materials supporting school trips to the Isle of Wight
Book today with Education Destination and get full access to this and hundreds more quality resources

www.edudest.uk



Cloze Exercise

The dinosaurs lived in the _____.

Even now, millions of years later, _____ and _____ are still being found.

There are two types of dinosaur: _____ (plant-eating) and _____ (meat-eating).

_____ are the direct descendants of dinosaurs.

Word Bank

carnivore fossils Birds
footprints past herbivore