



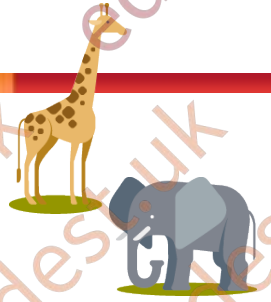
African Adventure Challenge!

Size is everything!

Let's practise those estimation skills...

Student Introduction

- ▶ The keepers at Robin Hill need to see how much their beasts have grown!
- ▶ Can you help figure out their size?



On-site Estimation

Teaching resources by Education Destination Ltd.

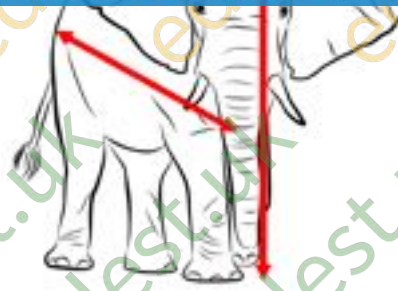
Curriculum relevant materials supporting school trips to the Isle of Wight

Book today with Education Destination and get full access to this and hundreds more quality resources

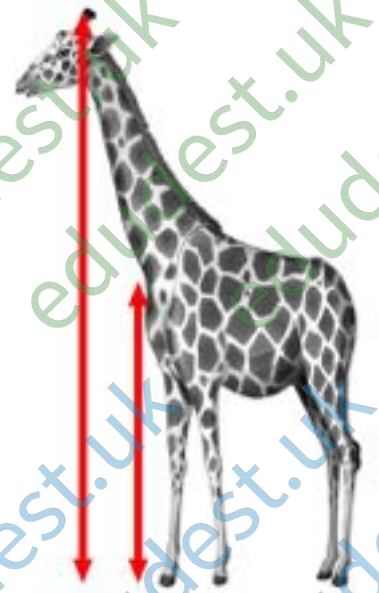
www.edudest.uk



Height _____
Length _____



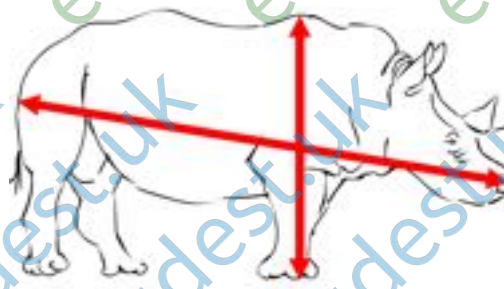
Height _____
Length _____



Height _____
Leg height _____



Height _____
Length _____



Height _____
Length _____



Length to tip of tail

Estimate in centimetres (to the nearest 10cm):

White Rhino

The length of the white rhino's horn _____ cm



African Elephant

The height and width of the elephant's ear

Height _____ cm

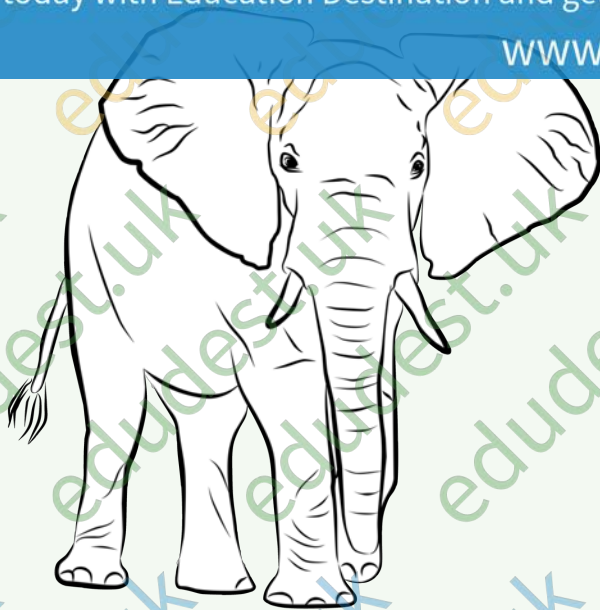
Width _____ cm

Teaching resources by Education Destination Ltd.

Curriculum relevant materials supporting school trips to the Isle of Wight

Book today with Education Destination and get full access to this and hundreds more quality resources

www.edudest.uk



The area of one elephant's ear _____ square cm

The length of the elephant's tusk _____ cm

Circumference of the elephant's leg _____ cm

Q.

Which species of animal in the African Adventure do you think is the heaviest?

Post-visit Data Table:

Species of Animal	Fastest Speed		Average Weight		Average Height	
	Metres per second (mps)	Rank	Kilograms (kg)	Rank	Metres	Rank
Zebra						
White Rhino						
African Elephant						
Ostrich						
Crocodile						
Lion						
African Buffalo						
Cheetah						
Western Gorilla						

TASK

- » Now you have the data, put the animals in rank order by giving the highest amount rank 1, the second highest rank 2 and so on.
- » Choose one of the categories to record on a chart. For example: all the average heights.
- » What type of chart or graph would show the data best?
- » Will your chart be vertical or horizontal?

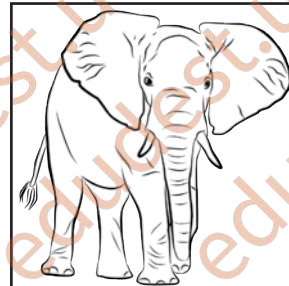
Set of Animal Labels



Zebra



Ostrich



African Elephant

Teaching resources by Education Destination Ltd.

Curriculum relevant materials supporting school trips to the Isle of Wight

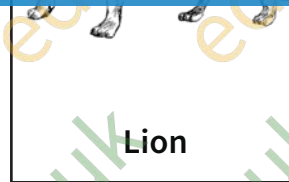
Book today with Education Destination and get full access to this and hundreds more quality resources

www.edudest.uk

Giraffe



White Rhino



Lion



Cheetah



African Buffalo



Crocodile



Western Gorilla



Animal Measurements

	to cm	to half metre	metre
Adult Zebra	H. 1.55m L. 1.90m	1.5m 2.0m	1m /2m 2m
Giraffe	H. 7.31cm Leg 2.4m	7.5m 2.5m	7m 2m

Teaching resources by Education Destination Ltd.
 Curriculum relevant materials supporting school trips to the Isle of Wight
 Book today with Education Destination and get full access to this and hundreds more quality resources
www.edudest.uk

Ostrich	H. 2.25m L. 1.83m	2m 2m	2m 2m
----------------	----------------------	----------	----------

Buffalo	H. 1.47m L. 2.26	1.5m 2.5m	1m 2m
----------------	---------------------	--------------	----------

Lioness	H. 1.48m L. 2.26m	1.5m 2.5m	
----------------	----------------------	--------------	--

Gorilla	H. 1.30m L. 1.09m	1.5m 1m	
----------------	----------------------	------------	--

White Rhino	H. 1.53m L. 2.82 m	1.5m 3m	2m 3m
--------------------	-----------------------	------------	----------

Horn 0.45m (nearest 10cm: 40/50cm)

Elephant	H. 3.05m L. 4.88m	3m 5m	3m 5m
-----------------	----------------------	----------	----------

Tusk	110cm		
Ear H.	1.7m		
W.	1m		
Area	1.4sq m		