



Troubled Waters!

Investigating Conflict on Southampton Water

Student Introduction

- ▶ In these exercises you will understand what is meant by 'conflict' in a maritime sense.
- ▶ You will travel along Southampton Water on board a ferry to get a first-hand view of day to day conflicts.

Teaching resources by Education Destination Ltd.

Curriculum relevant materials supporting school trips to the Isle of Wight

Book today with Education Destination and get full access to this and hundreds more quality resources

✓ Reach www.edudest.uk

✓ Complete the tasks on the following pages.

Student Introduction

You will be travelling to the Isle of Wight on a Red Funnel ferry. You will board the ferry at Town Quay, Southampton and the ferry will take you down Southampton Water, across the Solent (the area of water between the mainland and the Isle of Wight) and you will arrive at East Cowes on the Isle of Wight.

Southampton Water, and the Solent, is a multi-use area. There is a wide range of activities going on both on and off the water and, as a result, conflicts arise.

Throughout these tasks you will be investigating the range of activities taking place in this area, considering how and why conflicts arise between these activities and, finally, looking into the ways in which management strategies are attempting to control these issues.

During your crossing, you will be asked to undertake THREE simultaneous observation tasks, each of which is linked.



What is meant by “conflict”?

What do we mean when we use the term “**conflict**”?

Work with a partner to try and write a definition in the space below.

“Conflict is...

Teaching resources by Education Destination Ltd.

Curriculum relevant materials supporting school trips to the Isle of Wight

Book today with Education Destination and get full access to this and hundreds more quality resources

www.edudest.uk

Identifying conflicts...

In Geography, we usually talk about conflict in terms of opposing views or opinions about how a resource should be used.

Different user groups (sometimes called **stakeholders**) have different ideas and needs, and often this can lead to conflict.

For example, conservationists want to preserve the natural ecosystems, habitats and wildlife of an area, while developers may want to build in that area; a conflict of interests arises.

Competition between development and conservation is a typical example but, in the case of Southampton Water, conflict can simply arise between the wide variety of vessels trying to use the water at the same time.

TASK: Over the page you will find various images of Southampton Water.

Can you should identify and explain as many possible conflicts as you can by adding **annotations** around the photos?

LABELS -vs- ANNOTATIONS
- what's the difference?

LABELS identify features in the photograph

ANNOTATIONS add detail in terms of explanation, e.g. explain how/why a conflict may occur



Teaching resources by Education Destination Ltd.

Curriculum relevant materials supporting school trips to the Isle of Wight

Book today with Education Destination and get full access to this and hundreds more quality resources

www.edudest.uk



AT SCHOOL

TASK
2

Before your visit, you looked at some photos and started to think about how Southampton Water is used, and how the different human activities might conflict with one another.

You are now going to carry out some fieldwork activities on your

ferry journey to consider these conflicts in more detail, and to start to think about how they could be managed.



Conflict Matrix

A conflict matrix is a tool that can be used to help identify conflicts that may occur between different user groups.

Teaching resources by Education Destination Ltd.

Curriculum relevant materials supporting school trips to the Isle of Wight

Book today with Education Destination and get full access to this and hundreds more quality resources for your journey.

www.edudest.uk

The example below shows the start of a conflict matrix.

A couple of the human activities taking place on Southampton Water have been put into the matrix for you.

	Sailing	Cargo Shipping	Industry (Fawley)
Sailing			
Cargo Shipping			
Industry (Fawley)			

You write the activities along the top and sides of the matrix

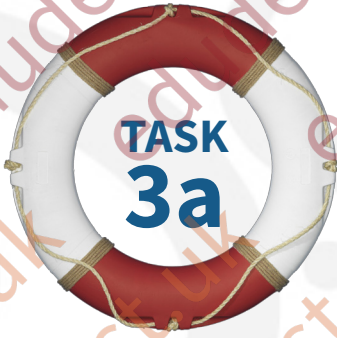
You are going to complete the matrix using a simple tick and cross system where:

Tick = conflict is highly likely / would occur here

Cross = conflict is highly unlikely to / would not occur here

? = It is unclear / conflict may occur in certain situations

ON THE FERRY



As you cross Southampton Water and the Solent, complete your detailed conflict matrix using the key you designed at school. There's space for 10 different aspects, so choose carefully!

For completeness, write up your key in the footer.

	Sailing	Cargo Shipping	Industry (Fawley)						
Sailing									

Teaching resources by Education Destination Ltd.
 Curriculum relevant materials supporting school trips to the Isle of Wight
 Book today with Education Destination and get full access to this and hundreds more quality resources
www.edudest.uk

KEY

ON THE FERRY

TASK
3b

Southampton Water and the Solent are incredibly busy, with a wide variety of activities going on both on and off the water.

Focusing on the activities on the water, work with a partner to identify as many different types of vessel that you have observed as you can. Tick any that you have seen on your crossing today.

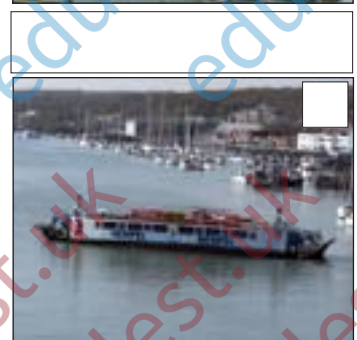
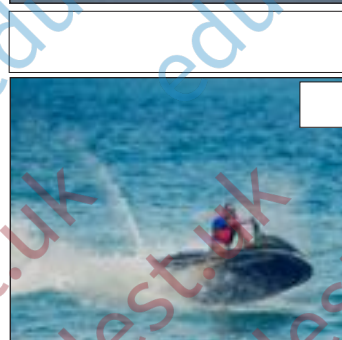
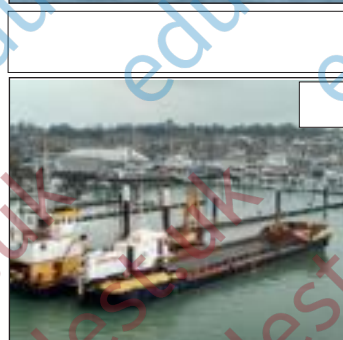
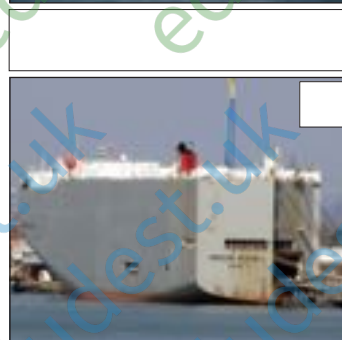
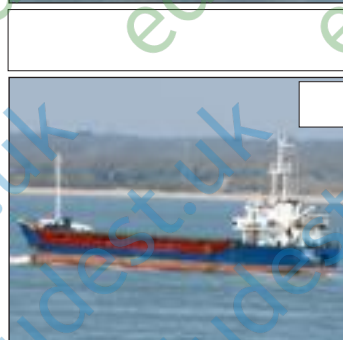
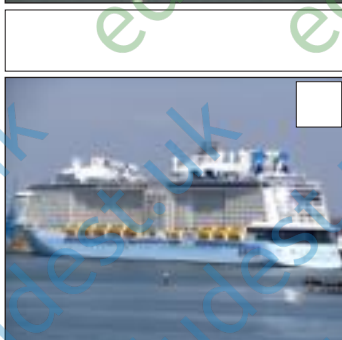
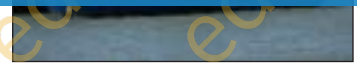


Teaching resources by Education Destination Ltd.

Curriculum relevant materials supporting school trips to the Isle of Wight

Book today with Education Destination and get full access to this and hundreds more quality resources

www.edudest.uk





ON THE FERRY

107221

What do you think are some of the safety issues which need to be managed, based on the variety of different types of vessel using Southampton Water and The Solent? *Discuss these with another student.*

You are now going to look out for any measures you can see which address issues of safety and navigation and help to manage Southampton Water as a multi-use resource.

Each time that you see one of the following, look at where it is placed, and consider how it might help to manage safety and/or navigation. (Don't worry if you miss seeing any of them – just have a look at the picture and think about how it might be helpful!):



Navigation Buoys

Look out for both red and green ones!

Teaching resources by Education Destination Ltd.

Curriculum relevant materials supporting school trips to the Isle of Wight

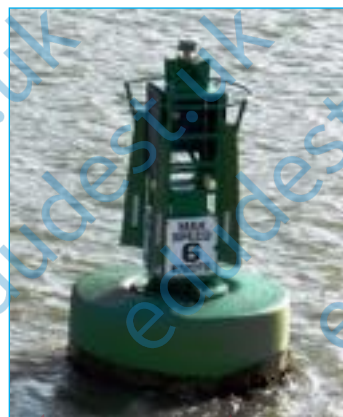
Book today with Education Destination and get full access to this and hundreds more quality resources

What do you think... www.edudest.uk mean?



Police / Coastguard / Harbour Patrol boats

This technique helps to manage navigation and safety by...



Speed limit signs / buoys

This technique helps to manage safety by...



Warning signs

This technique helps to manage safety by...

Warning signs

This technique helps to manage safety by...



Teaching resources by Education Destination Ltd.

Curriculum relevant materials supporting school trips to the Isle of Wight

Book today with Education Destination and get full access to this and hundreds more quality resources

www.edudest.uk



The Cowes breakwater

This technique is helpful because...

BACK AT SCHOOL

TASK
4

On the ferry crossing you observed a lot of activity happening in the Solent and Southampton Water, and you considered the practical conflicts that may arise as a result of this.

You also observed some of the navigational and safety measures that have been implemented to address these issues.

Follow-up Activities

Carry out research into conflicts in the Solent / Southampton Water and find out what is done to try to ensure that all of the different user groups' needs are catered for.

Your teacher will tell you exactly how they want you to complete the research and then present your work.

Essentially, you should include information on:

Teaching resources by Education Destination Ltd.

Curriculum relevant materials supporting school trips to the Isle of Wight

Book today with Education Destination and get full access to this and hundreds more quality resources

www.edudest.uk

You should include your own fieldwork (e.g. notes taken by you produced) and your own photos, as well as information obtained from the internet.

Useful Websites / URLs

The following websites are a good starting place. They can all be accessed from the following URL:

<http://edudest.uk/followup> and enter the code for this document - **107221**.

Solent Forum

Take a look at page 8 of this document, which has some good information on conflicts.

Southampton Vessel Traffic Services ("VTS")

Explore the web pages using the left hand menu to find information about how leisure and recreation needs are being managed alongside other port activities.

Southampton VTS Guidance

A document produced by Associated British Ports, updated in 2014, which gives advice and guidance to those who enjoy recreational activities on Southampton Water.

Southampton VTS Capital Projects

Look at the information about "SWRUG" on page 4.

