

Ship Ahoy!

Vessel spotting challenge!

Student Introduction

- ▶ During your ferry crossing keep count of all the different types of boats and ships that you can see.
- ▶ Work in pairs or small groups.



Let's gather some data!

During your ferry crossing, you will see many ships and boats at work.

With your partner or team, make a note of the different types you see, and keep

Teaching resources by Education Destination Ltd.

Curriculum relevant materials supporting school trips to the Isle of Wight

Book today with Education Destination and get full access to this and hundreds more quality resources

You will use this data later to categorise the types of boat/ship and design a bar chart showing

www.edudest.uk



Type:

Tally:



Type:

Tally:



Type:

Tally:



Type:

Tally:



Type:

Tally:



Type:

Tally:



Type:

Tally:



Type:

Tally:

Turn over for more vessel types!



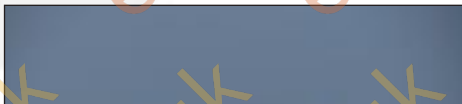
Type:
Tally:



Type:
Tally:



Type:
Tally:

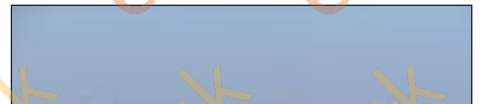
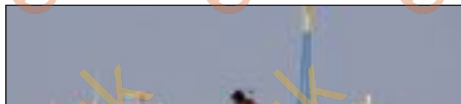


Teaching resources by Education Destination Ltd.

Curriculum relevant materials supporting school trips to the Isle of Wight

Book today with Education Destination and get full access to this and hundreds more quality resources

www.edudest.uk



Type:
Tally:

Type:
Tally:

Type:
Tally:



Type:
Tally:



Type:
Tally:



Type:
Tally:



Type:
Tally:

Seen something different? Draw it!

Seen something different? Draw it!

Here are close-up details from some of the vessels in the previous photos.

To which vessel do they belong? Examine the details to identify the vessel's purpose and label each photo accordingly.



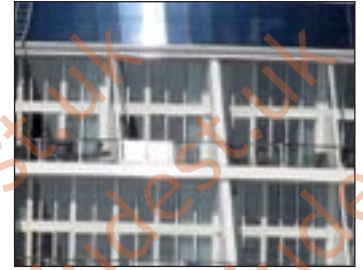
Vessel:



Vessel:



Vessel:



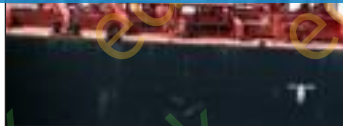
Vessel:

Teaching resources by Education Destination Ltd.

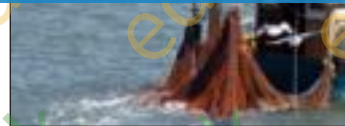
Curriculum relevant materials supporting school trips to the Isle of Wight

Book today with Education Destination and get full access to this and hundreds more quality resources

www.edudest.uk



Vessel:



Vessel:



Vessel:



Vessel:

More clues can be found in the port facilities which are designed to suit each vessel's cargo.

Which facility belongs to which type of cargo? Again, study the details to match the vessels carefully.



Vessel:



Vessel:



Vessel:



Vessel:



Categorise the vessels

Now that you've counted all the different boats and ships, it's clear that there are many different types.

In this exercise you will now learn a little more about the different types of vessel you saw and we will put them into just 6 categories.

Once you have read the descriptions, transfer all of your tally marks from Task 1.

BOATS & SMALL SHIPS

Designed for:

- ▶ Carrying passengers on local and harbour cruises
- ▶ Catching fish close to land
- ▶ Pleasure - surfing, water-skiing, dinghies, motor boating etc.
- ▶ Sailing and racing events, eg. "Cowes Week"



TOTAL TALLY:

Inside you'll find:

- ▶ Teaching resources by Education Destination Ltd.
- ▶ Curriculum relevant materials supporting school trips to the Isle of Wight

Book today with Education Destination and get full access to this and hundreds more quality resources

www.edudest.uk

Designed for:

- ▶ Taking passengers on pleasure trips around the world

Inside you'll find:

- ▶ People
- ▶ Hotel-like accommodation
- ▶ Facilities for thousands of passengers and hundreds of staff
- ▶ Recreation activities such as cinemas, shops, restaurants, gymnasiums and swimming pools

TOTAL TALLY:

FREIGHT & CARGO SHIPS

Designed for:

- ▶ Transporting goods around the world, including vehicles, food, oil and gas

Inside you'll find:

- ▶ Container ships - pretty much anything!
- ▶ Freighters - glass, grain, sand, stone, scrap metal, fertiliser etc.
- ▶ Tankers - crude oil, natural gas, petrol, diesel, heating oil etc.
- ▶ Vehicle carriers - cars, vans, trucks, farm machinery, diggers etc.



TOTAL TALLY:

POLICE, CUSTOMS & BORDER AGENCY

Designed for:

- ▶ Making sure nothing illegal happens in the port, e.g. smuggling

Inside you'll find:

- ▶ Specialised crew
- ▶ Technical equipment including radar, GPS, radio etc.



TOTAL TALLY:

SAFETY & SECURITY**Designed for:**

- ▶ Ensuring everyone remains safe in the harbour (e.g. fire fighting, dredging)
- ▶ Piloting foreign ships into unfamiliar ports
- ▶ Tugging huge ships into and out of the harbour

Inside you'll find:

- ▶ Specialised crew
- ▶ Technical equipment including radar, GPS, radio etc.



TOTAL TALLY:

FERRIES**Designed for:**

- ▶ Moving large numbers of people and vehicles over short distances, for example to and from the Isle of Wight



TOTAL TALLY:

Inside you'll find:

Teaching resources by Education Destination Ltd.

Curriculum relevant materials supporting school trips to the Isle of Wight

Book today with Education Destination and get full access to this and hundreds more quality resources

www.edudest.uk

Draw a bar chart!

Using the graph paper on the next page, you are now going to convert your tally data into a bar chart.

We've already added the vessel categories to the chart for you.

Here's what you need to do to complete the chart:

1. Add a title "**Types of vessels seen between Southampton & Cowes**".
2. Work out which is your biggest tally and **add a suitable scale**. For example, if the highest number was 25, the best scale might be 5, 10, 15, 20 and 25.
3. **Draw bars on the chart** for each vessel category.
4. Fill in each bar with a **different colour**.

Now that your chart is complete, **compare it with your classmates**. Have you got different numbers for the different types of vessel? If so, **write down some reasons why you think this might have happened**:



Teaching resources by Education Destination Ltd.

Curriculum relevant materials supporting school trips to the Isle of Wight

Book today with Education Destination and get full access to this and hundreds more quality resources

www.edudest.uk

TITLE:

Number of vessels seen

0

BOATS &
SMALL SHIPS

CRUISE
SHIPS

FREIGHT &
CARGO SHIPS

FERRIES
POLICE, CUSTOMS
& BORDER AGENCY

VesselCategory

BACK AT SCHOOL

Visit the Associated British Ports website for Southampton

<http://goo.gl/Xg7C3b>

and

<http://goo.gl/ThglpW>

to find out more about...

a) ... the types of cargo vessel you have seen. The Live Shipping Schedule “Type” column gives you more information about them. If you want to know more, look them up under <http://goo.gl/vgofM7>

b) ... the origin of a vessel by looking at the “Origin” column. You can also use the world map to see how

c) ... about the vessel’s route by looking at the “Destination” column. You can also use the world map to see how much traffic is coming from each country.

Teaching resources by Education Destination Ltd.

Curriculum relevant materials supporting school trips to the Isle of Wight

Book today with Education Destination and get full access to this and hundreds more quality resources

www.edudest.uk

Here is an extract you could use:

Ship Name	Lloyds No	Type	Flag	Estimated Time of Arrival	Dir	Origin	Destination	Side To	Draft	LOA	DWT	Agent
TONSBERG	9515383	Ro/Ro (URR)	MLT	18-May-2015 13:00	Nab	Zeebrugge	44	S	10.10	265.00	41820	Wallenius Wilhelmsen Logistics
AUTOPRIDE	9131955	Ro/Ro (URR)	PRT	18-May-2015 14:45	Nab	Le Havre	105	S	5.40	126.90	4442	Wallenius Wilhelmsen Logistics
CAROLINE A	9570565	Chemical Tank (TCH)	ITA	18-May-2015 16:30	Nab	Rotterdam	St Helens Anchorage		4.50	95.90	4624	Inchcape Shipping Services (UK) Ltd
LADY STEPHANIE	9104781	Lpg (LPG)	ATG	18-May-2015 TBA	Nab	Port Jerome	St Helens Anchorage		0.10	99.50	4320	Graypen Limited
GRETE MAERSK	9302889	Container Carrier (UCC)	DNK	19-May-2015 06:30	Nab	Tangier	DP World Container Terminal		1.00	366.93	115700	Denholm Wilhelmsen Ltd.

- ▶ Find out what the titles of the columns mean - particularly “Draft”, “LOA” and “DWT” because these tell you a lot about the ship.
- ▶ Create a Glossary with all of the words and abbreviations you have learned.



107482

Teaching resources by Education Destination Ltd.

Curriculum relevant materials supporting school trips to the Isle of Wight

Book today with Education Destination and get full access to this and hundreds more quality resources

www.edudest.uk

SOUTHAMPTON