



J.B. Priestley

Resident at Brook Hill House, Brook

J.B. Priestley was born in Bradford in 1894 and after being educated at Belle Vue Grammar School, he went to work for a wool firm called Helm & Co.

It was whilst working here that he started writing at night; he had some of his articles published in newspapers as far away as London and he later moved south.

He served in the World War I and experienced many injuries

– in 1916 he was buried alive by a trench mortar after being seriously wounded. He describes many of these

Teaching resources by Education Destination Ltd.

Curriculum relevant materials supporting school trips to the Isle of Wight

Book today with Education Destination and get full access to this and hundreds more quality resources

www.edudest.uk

not know him particularly well, he came across as rather gruff.

During his time on the Isle of Wight, he wrote many of his works, including *An Inspector Calls*, which is one of his best-known plays and a classic of the mid-twentieth century.

Before your visit...

- ▶ Research the life of J.B. Priestley and produce a timeline of Priestley's works.
- ▶ On this timeline, you could also include some of his major, personal life-events (e.g. his involvement in the war, the birth of his children, his marriages etc.) as well as the historical events of the time.

5 important things I've learned about J.B. Priestley and his life are:



- 1.
- 2.
- 3.
- 4.
- 5.



ENGLISH ACTIVITY

Despite spending many happy years on the Isle of Wight, the Priestleys left in 1959. The reason was that living on an island meant they felt 'cut off' from friends and family.

They said "...we took pity on our family and friends and moved somewhere more accessible. But I am not sure we were right."

TASK:

- ▶ Consider a time when you may have regretted a decision which you made.
- ▶ Think about the consequences of your actions (and why you made them in the first place).
- ▶ Produce a draft of a poem which describes your regret.

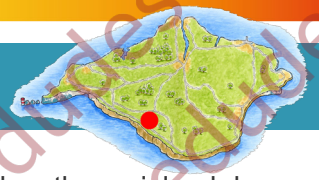
Teaching resources by Education Destination Ltd.

Curriculum relevant materials supporting school trips to the Isle of Wight

Book today with Education Destination and get full access to this and hundreds more quality resources

www.edudest.uk





The Priestleys often felt isolated from their friends and family who lived on the mainland due to the difficulties living on the Isle of Wight.

At this time, people didn't have the technology we have today. They wrote letters to each others to express their feelings and let their friends know what was happening in their everyday lives.

The slower pace of life meant that people could sit and take the time to craft a letter. They also did less in their lives so could focus on the things they did do.

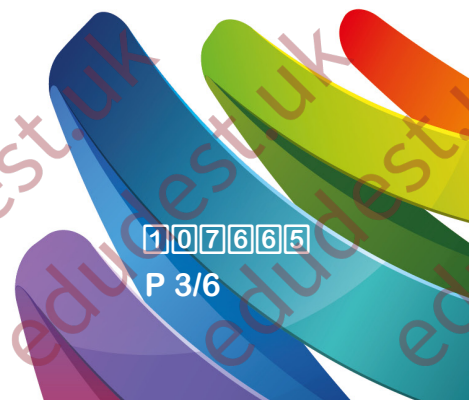
- ▶ Imagine you have moved away from your friends to a new town. Write a letter to a friend of your choice describing your feelings and the things you have been doing in your new town.
- ▶ You could include information about what your new house is like, what you are missing, what you can see from the house - sea, beach, cliff, hill, down, etc., and who lives nearby.

Teaching resources by Education Destination Ltd.

Curriculum relevant materials supporting school trips to the Isle of Wight

Book today with Education Destination and get full access to this and hundreds more quality resources

www.edudest.uk





Get Creative English - Mini Essays!

Although he had a reputation for being a little gruff (by those who didn't know him well), Priestley often found pleasure in the smallest of things.

In a book called *Delight*, he penned over one hundred mini essays which described experiences which made him happy.

These simple pleasures ranged from activities such as 'dancing', 'waking to the smell of coffee, bacon and eggs', and 'manly talk' to 'fountains', 'cooking in the open air' and 'making stew'.

Activity:

Teaching resources by Education Destination Ltd.

Curriculum relevant materials supporting school trips to the Isle of Wight

Book today with Education Destination and get full access to this and hundreds more quality resources

may be that you are experiencing some form of happiness right at this moment. See if you can capture and describe it. Your teacher will show you some extracts from Priestley's mini essays to inspire you!

www.edudest.uk



History - Investigate the Impact!

- ▶ Investigate how J.B. Priestley is believed to have been the catalyst to the emergence of the C.N.D. (Campaign for Nuclear Disarmament).
- ▶ Research the group and produce a timeline of its events.



The Long Stone Mottistone, near Brook



The Long Stone is a good name for this site in Mottistone. It stands 3.9 m tall and is made from a local stone called greensand. The site was excavated by C.N. Hawkes in 1956 and these excavations suggested that this stone could have been the entrance to a barrow.

Long barrows are 'collective tombs' which were used for burying the dead. In the Stone Age heroes and leaders were

Teaching resources by Education Destination Ltd.

Curriculum relevant materials supporting school trips to the Isle of Wight

Book today with Education Destination and get full access to this and hundreds more quality resources

www.edudest.uk

In 1953, the playwright J.B. Priestley married Vicky, the daughter of C.N. Hawkes, who was a renowned archaeologist. She helped excavate the long barrow at the Long Stone, with the County Archaeologist Jack Stone.

Before you visit:

Go to the National Trust Website and look at the information about the Long Stone:

<http://www.nationaltrust.org.uk/mottistone-estate/features/the-long-stone-at-mottistone>

When you're on-site:

- ▶ Sit and sketch the Long Stone.
- ▶ Photograph the monument with people alongside, showing its size.
- ▶ Invent your own myth or legend for the Long Stone. You could make notes now about the key characters and events before refining your writing back at school, ensuring that you have included the correct features of this style of writing. Use the template on page 6 to help you.

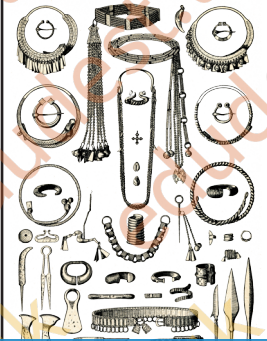
Back at school...

- ▶ Have a go at representing the Long Stone as a monument with mystical powers – how could you use media to represent this?
- ▶ Invent a myth or legend for a building/monument of significance in your local area.



Ideas for your myth or legend

Things that might be found in ancient barrows

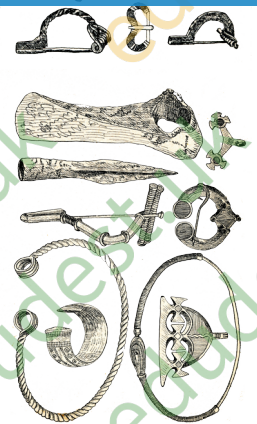


Teaching resources by Education Destination Ltd.

Curriculum relevant materials supporting school trips to the Isle of Wight

Book today with Education Destination and get full access to this and hundreds more quality resources

www.edudest.uk



KEY WORDS

- knife
- sword
- brooch
- axe
- memento
- lord
- warrior
- victor
- afterlife